

Monthly Fuel Price Report

– October 2021



3 November 2021

The RACQ monthly fuel price report presents a summary of the fuel price trends in Queensland for October 2021.

Key points

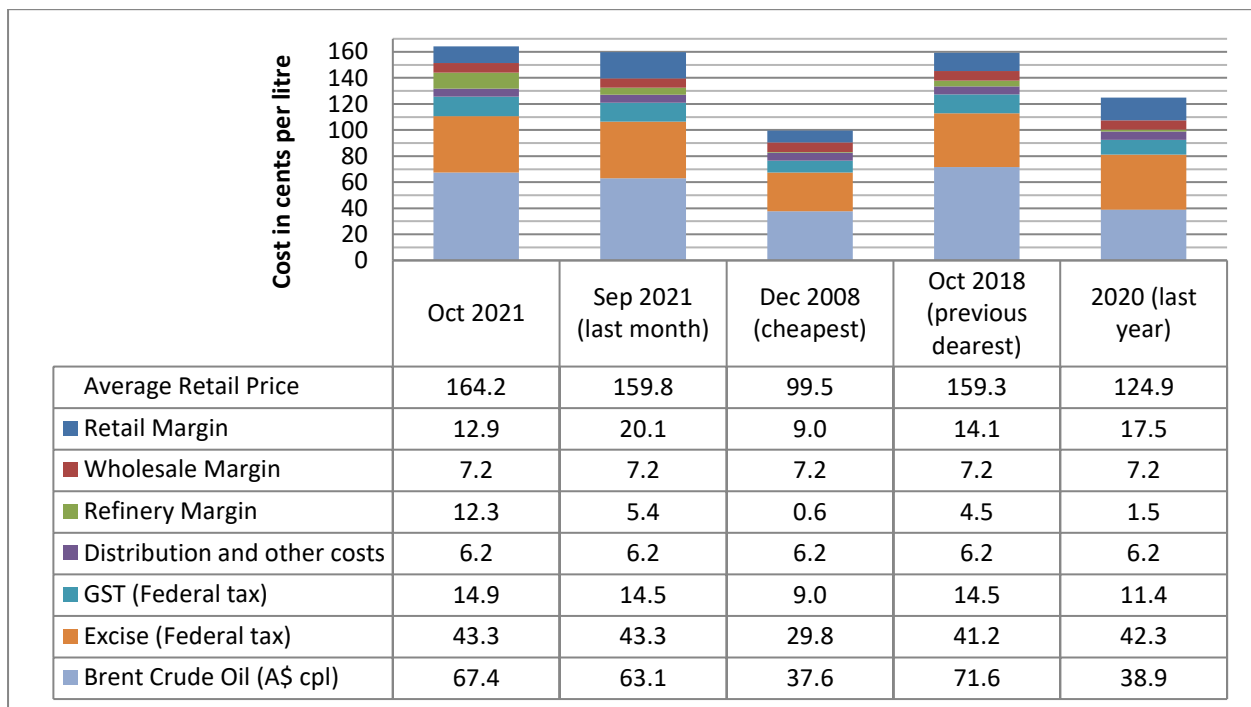
- At 164.2 cpl, the monthly average ULP price in Brisbane for October hit a new all-time record high. It was 4.4 cpl higher than September (the previous record high).
- A new record high daily average ULP price of 178.8 cpl was observed in Brisbane on 19 October 2021.
- At 12.9 cpl, indicative ULP retail margins in Brisbane in October were down compared to September, however refinery margins increased by a similar amount and total margins were largely unchanged.
- ULP total margins (retail, wholesale and refinery) were 32.4 cpl, 0.3 cpl lower than September.
- Brisbane was the third most expensive Australian capital city to buy ULP (Sydney and Hobart were dearer). Brisbane was 11.8 cpl dearer than Perth, the cheapest capital.
- At 178.5 cpl, the monthly average PULP 95 price in Brisbane hit a new record high, exceeding the previous high of 174.1 cpl observed in September 2021 and October 2018.
- At 159.0 cpl, the monthly average Brisbane diesel price in October was 9.3 cpl dearer than September.
- Brisbane was the second most expensive of the large capital cities for diesel. Sydney was the most expensive, at 0.5 cpl more expensive than Brisbane. Brisbane was 4.4 cpl dearer than Perth, the cheapest capital.
- ULP and diesel prices in regional Queensland in October were cheap compared to SEQ. Indicative retail margins on ULP were lower than in Brisbane in all 37 regional centres.
- The average ULP price in regional Queensland was 158.8 cpl, 8.8 cpl higher than September. The average diesel price in regional Queensland was up 8.9 cpl, at 158.3 cpl.
- Roma was the cheapest Queensland regional centre to buy ULP in October, at 152.9 cpl.
- Beaudesert had the cheapest average diesel price, at 153.2 cpl.
- Longreach was the most expensive Queensland regional centre to buy ULP and diesel in October, at 170.2 cpl and 167.5 cpl for ULP and diesel, respectively. Longreach was the only centre in which ULP was more expensive than Brisbane.
- A new daily average record high ULP price was observed in several regional centres, including Bundaberg, Cairns, Gladstone, Longreach and Townsville. New record high monthly average prices were observed in Longreach, Toowoomba and a few other centres.
- The Brent crude oil price strengthened in October but should stabilise in November. However, the recent increases in the oil price are yet to fully flow through to Queensland retail markets and new all-time record high retail prices are likely to be observed in November.

ULP cost breakdown in Brisbane

At 164.2 cpl, the average price of ULP in Brisbane for October was the record highest monthly average, and 4.4 cpl dearer than September (which was the previous highest). Prior to the current period of record high prices (observed in September and October 2021), the previous record highest monthly average ULP price for Brisbane was 159.3 cpl, observed in October 2018.

The monthly average indicative retail margin for October was down 7.2 cpl, at 12.9 cpl. However, refinery margins increased by a comparable amount. At 12.3 cpl, the average indicative refinery margin was up by 6.9 cpl, leading to no substantial change in total fuel company margins. Total margins (retail, wholesale and refinery) at 32.4 cpl, were marginally (0.3 cpl) lower than the September average of 32.7 cpl, and 6.2 cpl higher than the 2020 annual average of 26.2 cpl.

The chart below shows the cost breakdown for a litre of ULP sold in Brisbane for October 2021. For comparison, the cost breakdown for last month, last year, October 2018 – the previous most expensive month (prior to September/October 2021) and December 2008 – the cheapest month observed in recent years (since 2008), is also displayed.



Note: 2008 prices included the 8.5cpl Queensland fuel excise subsidy

The RACQ pricing model assumes that oil is imported into Australia and refined locally. However, Australia’s refinery capacity has reduced with the closure of two (of four) refineries. The two remaining refineries are Ampol’s refinery in Brisbane and Viva Energy’s refinery in Geelong. RACQ’s alternate pricing model assumes that fuel consumed in Queensland is refined in overseas refineries and imported into Australia as refined product. In this model, indicative importer margins replace refinery margins. Gross indicative importer margins on ULP in October were 2.2 cpl, 0.6 cpl lower than September, when they were 2.8 cpl.

Record high prices

The maximum daily average and monthly average ULP prices in Brisbane, Ipswich the Gold and the Sunshine Coast (and several regional centres) reached new all-time record high levels in October. A new record high daily average of 178.8 cpl was observed in Brisbane on 19 October 2021. This exceeded the previous record in Brisbane of 173.4 cpl observed on 15 September 2021.

The maximum daily average price in Ipswich at 174.8 cpl, exceeded the previous record observed in September, and the Gold and Sunshine Coast recorded highs of 179.1 cpl and 176.8 cpl, respectively.

These exceeded the previous record highs, observed in December 2019. The daily average record high of 179.1 cpl observed on the Gold Coast was the all-time highest daily average observed in any of the Queensland centres monitored by RACQ.

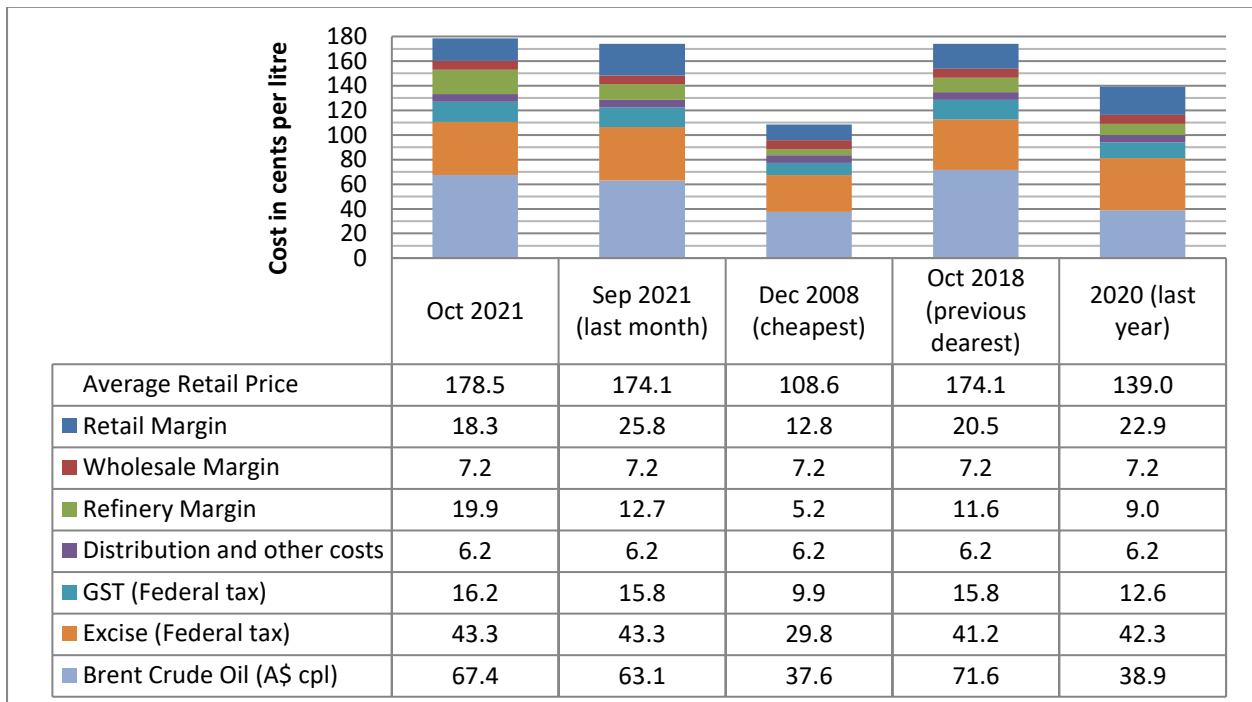
A new record high monthly average ULP price was observed in Greater Brisbane, Ipswich, the Gold Coast and the Sunshine Coast. The average ULP price in in Greater Brisbane, Ipswich and the Gold Coast exceeded the previous records observed in September 2021, and the Sunshine Coast was the highest since October 2018.

City	Record High Daily Average Price	Observed	Previous Record High Daily Average	Observed	Record High Monthly Average Price	Observed	Previous Record High Monthly Average	Observed
Brisbane	178.8	19/10/21	173.4	15/09/21	164.2	Oct-21	159.8	Sep-21
Ipswich	174.8	19-20/10/21	170.6	15/09/21	162.9	Oct-21	158.1	Sep-21
Gold Coast	179.1	20/10/21	173.0	12-13/12/19	165.6	Oct-21	160.6	Sep-21
Sunshine Coast	176.8	19/10/21	173.5	14/12/19	160.8	Oct-21	158.7	Oct-18

It is likely that these record highs will be exceeded again in November.

Record high dialy and monthly average ULP prices were also observed in regional Queensland. These are discussed further in the regional section below.

PULP 95 cost breakdown in Brisbane



Note: 2008 prices included the 8.5cpl Queensland fuel excise subsidy

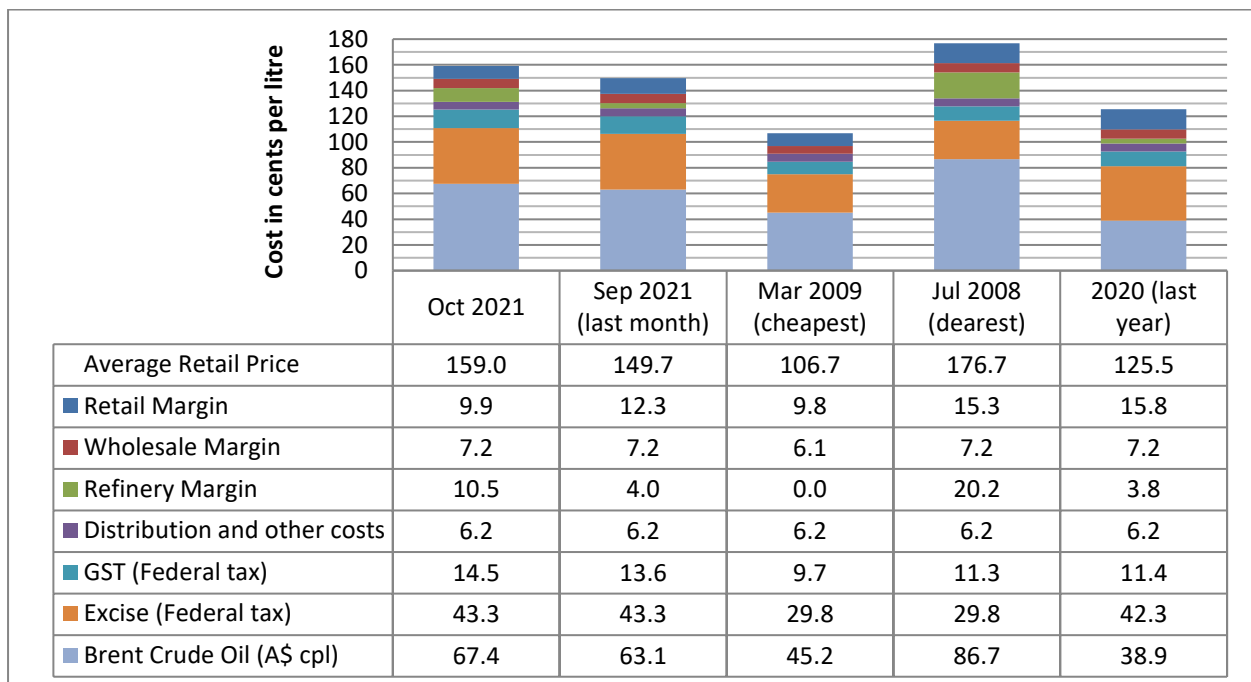
The chart above shows the cost breakdown for a litre of PULP 95 sold in Brisbane in October 2021. For comparison, the cost breakdown for last month, last year, October 2018 – the previous most expensive month (joint previous most expensive with September 2021) and December 2008 – the cheapest month observed in recent years (since 2008), is also displayed.

The average PULP 95 price in Brisbane in October was 178.5 cpl and was a new all-time record high, exceeding the previous record of 174.1 cpl observed in September 2021 and October 2018. The average PULP 95 price for Brisbane for October was 4.4 cpl higher than September.

The price difference between ULP and PULP 95 was unchanged from September, at 14.3 cpl. Indicative retail margins for PULP 95, at 18.3 cpl, were 7.5 cpl lower than September, and 4.6 cpl lower than the average for 2020. While retail margins fell substantially, refinery margins increased by a similar amount. Refinery margins at 19.9 cpl, were 7.2 cpl higher than September. Total margins, at 45.4 cpl, were largely unchanged (0.3 cpl lower) compared to September, when they were 45.7 cpl.

Diesel cost breakdown in Brisbane

The chart below shows the cost breakdown for a litre of diesel sold in Brisbane for October 2021. For comparison, the cost breakdown for last month, last year, March 2009 – the cheapest month and July 2008 – the most expensive month observed in recent years (since 2008), is also displayed.



Note: 2008 and 2009 prices included the 8.5cpl Queensland fuel excise subsidy

The average price of diesel in October, at 159.0 cpl, was 9.3 cpl higher than September. Indicative retail margins at 9.9 cpl were down 2.4 cpl, and refinery margins were up by 6.5 cpl, at 10.5 cpl. Total margins (retail, wholesale and refinery) in October were 27.6 cpl, 4.1 cpl higher than September, when they were 23.5 cpl.

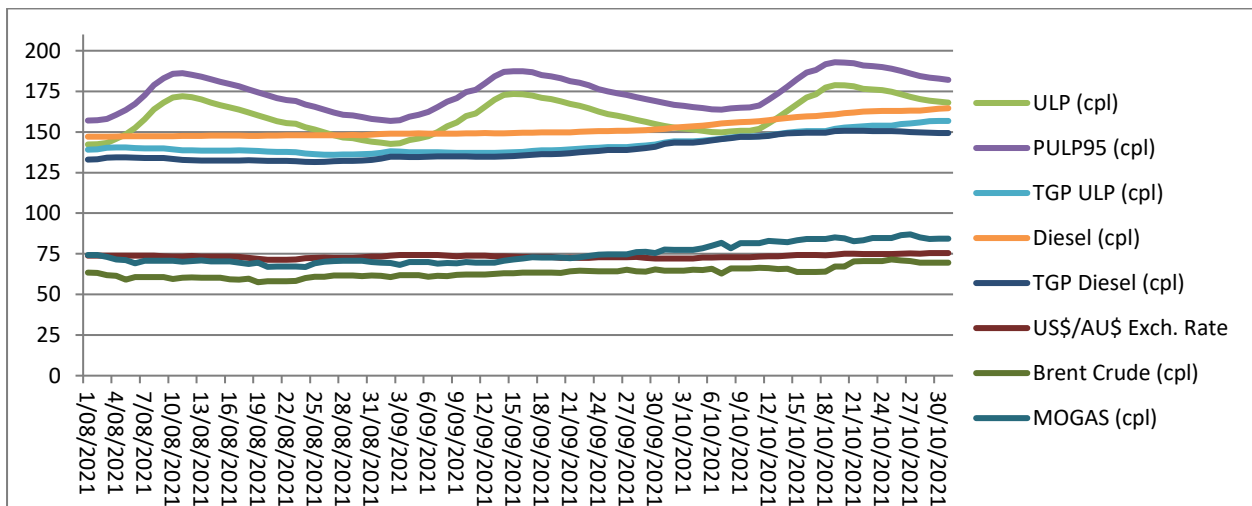
Diesel prices remained substantially lower than the record highs observed in 2008. The record high monthly average diesel price in Brisbane was 176.7 cpl, observed in July 2008.

Price trends

Two partial price cycles were observed in the Brisbane ULP market in October. The first price cycle ended at a low point of 149.8 cpl on 7 October. The second cycle started on 8 October and prices peaked at 178.8 cpl on 19 October (a new record high). Prices then slowly fell throughout the rest of October and into early November. At the time of writing the Brisbane ULP market was in the cheap phase of the cycle.

The average price of Brent in October at 107.2 A\$/bbl (79.3 US\$/bbl) or 67.4 cpl-A\$, was 6.9 A\$/bbl or 4.3 cpl-A\$ higher than September (at 100.3 A\$/bbl, 73.4 US\$/bbl, or 63.1 cpl-A\$). The average Brent price was last this high in October 2018.

Brent started October at 102.8 A\$/bbl (74.1 US\$/bbl). The oil price trended up through most of October and reached a local high point of 113.7 A\$/bbl (85.2 US\$/bbl) on 25 October – a three-year record high. A Brent price (in A\$-terms) this high was last observed in October 2018, when prices peaked at 121.8 A\$/bbl (observed 4/10/2018). The Brent price eased slightly in the last week of October and ended the month at 110.5 A\$/bbl (83.4 US\$/bbl).



Comparison to other capital cities

The table below presents the average October prices and retail margins on ULP and diesel for Australian capital cities, with the change compared to September in parentheses.

City	Average ULP Price (cpl)	Indicative ULP Retail Margin* (cpl)	Average Diesel Price (cpl)	Indicative Diesel Retail Margin* (cpl)
Brisbane	164.2 (4.4)	12.9 (-7.2)	159.0 (9.3)	9.9 (-2.4)
Adelaide	156.3 (13.5)	4.6 (1.8)	156.6 (11.2)	7.4 (-0.4)
Canberra	163.0 (5.9)	11.9 (-5.8)	163.6 (8.5)	14.3 (-3.3)
Darwin	160.3 (8.6)	4.0 (-3.1)	161.2 (6.9)	7.9 (-4.8)
Hobart	165.4 (9.5)	8.0 (-1.9)	163.9 (10.1)	8.6 (-1.4)
Melbourne	163.2 (6.6)	12.3 (-5.1)	158.5 (9.7)	9.6 (-2.1)
Perth	152.4 (2.1)	1.3 (-9.5)	154.6 (8.9)	5.7 (-2.8)
Sydney	164.8 (7.0)	13.6 (-4.8)	159.5 (9.7)	10.2 (-2.1)

* The retail margin is the average retail price minus the average local TGP and local freight costs (assumed to be the same as Brisbane: 1.04cpl). The TGP varies between cities.

Brisbane was the third most expensive of all capital cities and the second most expensive of the five largest capital cities for ULP in October. Sydney and Hobart were dearer than Brisbane by 0.6 cpl and 1.2 cpl, respectively. The average ULP prices in Perth, Adelaide, Darwin, Canberra and Melbourne were cheaper than Brisbane by 11.8 cpl, 7.9 cpl, 3.9 cpl, 1.2 cpl and 1.0 cpl, respectively.

For diesel, Brisbane was the second most expensive of the five largest capital cities and was only marginally (0.5 cpl) cheaper than Sydney (the most expensive of the five largest). Darwin, Canberra and Hobart were also more expensive than Brisbane by 2.2 cpl, 4.6 cpl and 4.9 cpl, respectively. The average diesel prices in Perth, Adelaide and Melbourne were cheaper than Brisbane by 4.4 cpl, 2.4 cpl and 0.5 cpl, respectively.

Comparison of the SEQ metropolitan centres

The Sunshine Coast was the cheapest centre in SEQ to buy ULP (and diesel) in October, as it was in September and August, with an average price of 160.8 cpl. Second was Ipswich at 162.9 cpl. Brisbane Bayside and Redlands was the most expensive area in SEQ at 168.2 cpl, 7.4 cpl dearer than the Sunshine Coast. The average ULP price increased in all SEQ centres compared to September. The average ULP price in Brisbane South increased by 3.7 cpl compared to September and the Sunshine Coast average increased by 9.7 cpl.

Ipswich was the cheapest SEQ centre to buy diesel in October at 157.9 cpl. The Sunshine Coast was a close second at 158.0 cpl. Central Brisbane was the most expensive area in SEQ to buy diesel at 161.6 cpl, 3.7 cpl dearer than Ipswich. Average diesel prices increased in all SEQ centres compared to September, by up to 10.2 cpl. The average price in Moreton Bay was up 7.9 cpl, and Logan was up by 10.2 cpl.

The price difference between the cheapest and dearest average diesel price in SEQ centres, at 3.7 cpl, was lower than ULP, for which the difference was 7.4 cpl.

The table below presents the average October prices and retail margins on ULP and diesel for SEQ metropolitan centres, with the change compared to September in parentheses. This analysis separates Brisbane into central, northern, southern, and bayside regions.

City	Average ULP Price (cpl)	Indicative ULP Retail Margin* (cpl)	Average Diesel Price (cpl)	Indicative Diesel Retail Margin* (cpl)
Central Brisbane	167.3 (5.3)	16.0 (-6.3)	161.6 (9.0)	12.5 (-2.7)
Brisbane North	163.2 (5.2)	11.9 (-6.4)	159.9 (9.4)	10.8 (-2.3)
Brisbane South	163.1 (3.7)	11.8 (-7.9)	158.6 (9.9)	9.5 (-1.8)
Brisbane Bayside/ Redlands	168.2 (5.4)	17.0 (-6.2)	160.6 (10.0)	11.5 (-1.8)
Logan	164.0 (4.2)	12.7 (-7.3)	159.5 (10.2)	10.4 (-1.5)
Ipswich	162.9 (4.8)	11.3 (-6.7)	157.9 (8.9)	8.5 (-2.8)
Moreton Bay	163.9 (3.8)	12.3 (-7.8)	158.3 (7.9)	8.9 (-3.8)
Gold Coast	165.6 (5.0)	13.7 (-6.6)	160.2 (9.9)	10.4 (-1.9)
Sunshine Coast	160.8 (9.7)	8.7 (-1.8)	158.0 (9.7)	8.0 (-2.0)

* The retail margin is the average retail price minus the average Brisbane TGP and varying local freight costs.

Fuel prices across Queensland

The average price of ULP across regional Queensland in October was 158.8 cpl, 8.8 cpl higher than September when the average price was 150.0 cpl. The average diesel price was 158.3 cpl, 8.9 cpl higher than September when the average price was 149.4 cpl.

Roma, with an average ULP price of 152.9 cpl, was the cheapest centre to buy ULP in October (as it was in September, August, July and June) and 11.3 cpl cheaper than Brisbane. Whitsunday/Proserpine was the second cheapest with an average ULP price of 153.1 cpl, and Bundaberg was the third cheapest at 153.5 cpl. Warwick, Lockyer Valley, Hervey Bay, Maryborough, Biloela, Kingaroy, Somerset, Moranbah, Miles, Ingham, Gympie, Yeppoon, Mackay, Beaudesert, Bowen, Dalby, Noosa, Blackwater, Childers, Rockhampton, Gladstone, Townsville, Innisfail, Nambour, Goondiwindi, Cairns, Atherton, Tully, Mareeba, Charters Towers, Mount Isa, Emerald and Toowoomba were all cheaper than Brisbane¹. At 170.2 cpl, Longreach was the most expensive centre for ULP and the only centre dearer than Brisbane. Longreach was 6.0 cpl more expensive than Brisbane and 17.3 cpl more expensive than Roma – the cheapest centre in Queensland.

Beaudesert had the cheapest diesel in Queensland in October (and September), at 153.2 cpl, 5.8 cpl cheaper than Brisbane. Roma, at 153.4 cpl, was second cheapest and 5.6 cpl cheaper than Brisbane. Lockyer Valley, Bundaberg, Somerset, Whitsunday/Proserpine, Biloela, Maryborough, Miles, Nambour, Bowen, Gladstone, Kingaroy, Moranbah, Noosa, Hervey Bay, Warwick, Toowoomba, Goondiwindi, Ingham, Innisfail and Charters Towers were also cheaper than Brisbane. Longreach¹ was the most expensive regional centre for diesel at 167.5 cpl, 8.5 cpl higher than Brisbane.

The table below presents the average October prices and retail margins on ULP and diesel for Queensland localities, with the change compared to September in parentheses.

Locality	Average ULP Price (cpl)	Indicative ULP Retail Margin* (cpl)	Average Diesel Price (cpl)	Indicative Diesel Retail Margin* (cpl)
Brisbane	164.2 (4.4)	12.9 (-7.2)	159.0 (9.3)	9.9 (-2.4)
Atherton	160.5 (7.8)	5.1 (-3.8)	160.1 (6.0)	6.7 (-5.7)
Beaudesert	157.9 (12.3)	5.8 (0.8)	153.2 (12.5)	3.2 (0.8)
Biloela	155.7 (7.6)	1.3 (-3.9)	155.8 (8.6)	4.0 (-3.0)
Blackwater	158.2 (9.6)	2.1 (-2.0)	159.0 (6.3)	5.4 (-5.4)
Bowen	157.9 (4.3)	1.5 (-7.3)	156.8 (10.3)	3.2 (-1.4)
Bundaberg	153.5 (7.9)	-1.2 (-3.6)	154.8 (9.3)	2.3 (-2.4)
Cairns	160.4 (8.0)	5.7 (-3.6)	160.1 (7.6)	7.5 (-4.1)
Charters Towers	162.5 (10.6)	6.7 (-1.1)	158.9 (9.3)	5.9 (-2.3)
Childers	158.7 (7.6)	4.6 (-3.9)	159.2 (11.1)	7.2 (-0.7)
Dalby	158.0 (9.4)	4.8 (-2.2)	159.2 (10.3)	8.2 (-1.4)
Emerald	162.7 (8.7)	5.8 (-2.9)	160.7 (8.6)	6.4 (-3.1)
Gladstone	158.8 (8.9)	5.6 (-2.6)	157.1 (8.8)	6.5 (-2.8)
Goondiwindi	159.9 (6.9)	5.3 (-4.7)	157.9 (7.1)	5.5 (-4.6)
Gympie	156.9 (9.1)	4.2 (-2.4)	159.4 (10.2)	8.8 (-1.6)
Hervey Bay	155.0 (8.6)	1.0 (-3.0)	157.5 (10.0)	5.7 (-1.8)

¹ RACQ does not monitor in all regional centres in Queensland. In discussing the cheapest or dearest centre, it is implied that this only refers to the centres listed in this report. Other centres may be more or less expensive.

Ingham	156.5 (8.5)	0.9 (-3.2)	158.5 (8.1)	5.7 (-3.6)
Innisfail	159.4 (8.4)	3.9 (-3.2)	158.7 (8.0)	5.2 (-3.7)
Kingaroy	155.9 (9.4)	2.7 (-2.1)	157.2 (10.5)	6.2 (-1.2)
Lockyer Valley	154.4 (6.7)	2.1 (-4.9)	154.1 (8.1)	4.0 (-3.6)
Longreach	170.2 (7.7)	9.1 (-3.8)	167.5 (9.8)	9.0 (-1.9)
Mackay	157.8 (8.9)	3.9 (-2.7)	159.4 (9.6)	8.3 (-2.0)
Mareeba	161.3 (8.3)	6.0 (-3.2)	161.2 (7.2)	7.9 (-4.4)
Maryborough	155.0 (9.1)	1.4 (-2.4)	156.1 (9.9)	4.6 (-1.8)
Miles	156.1 (10.5)	1.6 (-1.0)	156.1 (8.6)	3.8 (-3.2)
Moranbah	156.0 (4.8)	0.2 (-6.7)	157.2 (6.4)	4.2 (-5.3)
Mount Isa	162.6 (3.4)	-0.9 (-8.2)	160.0 (7.4)	-0.6 (-4.3)
Nambour	159.5 (9.2)	7.5 (-2.3)	156.6 (9.4)	6.7 (-2.4)
Noosa	158.1 (4.5)	5.8 (-7.0)	157.2 (10.1)	7.2 (-1.6)
Rockhampton	158.7 (7.6)	4.4 (-3.9)	159.7 (8.6)	8.0 (-3.1)
Roma	152.9 (9.0)	-3.0 (-2.5)	153.4 (9.6)	-0.3 (-2.1)
Somerset	155.9 (8.7)	3.6 (-2.9)	154.9 (9.6)	4.8 (-2.2)
Toowoomba	163.9 (10.8)	11.5 (-0.8)	157.6 (8.9)	7.3 (-2.9)
Townsville	158.8 (10.7)	4.3 (-1.0)	159.2 (10.2)	7.5 (-1.5)
Tully	160.7 (10.4)	4.6 (-1.2)	160.2 (9.1)	6.2 (-2.6)
Warwick	154.1 (8.3)	1.4 (-3.2)	157.5 (7.4)	7.0 (-4.3)
Whitsunday/Proserpine	153.1 (8.0)	-2.0 (-3.6)	155.2 (11.7)	2.8 (0.0)
Yeppoon	157.5 (8.3)	2.7 (-3.3)	159.1 (9.4)	7.0 (-2.3)

* The retail margin is the average retail price minus the average local TGP and local freight costs. The TGP and freight costs vary between cities. This indicative margin is calculated on the monthly average TGP and retail price.

Record high daily and monthly average ULP prices were observed in regional Queensland. A new record daily average high was observed in Atherton, Bowen, Bundaberg, Cairns, Charters Towers, Dalby, Emerald, Gladstone, Gympie, Innisfail, Kingaroy, Longreach, Mareeba, Maryborough, Townsville and Tully. A new record monthly average high was observed in Charters Towers, Longreach, Toowoomba and Tully.

City	Record High Daily Average Price	Observed	Previous Record High Daily Average	Observed	Record High Monthly Average Price	Observed	Previous Record High Monthly Average	Observed
Atherton	165.7	31/10/21	164.6	23/10/18	161.9	Oct-18		
Biloela	166.6	19/10/18			164.3	Oct-18		
Blackwater	167.9	5/11/18			162.3	Oct-18		
Bowen	163.4	31/10/21	162.1	22/10/18	160.2	Jan-14		
Bundaberg	160.0	31/10/21	158.9	15/07/08	157.4	Jul-08		
Cairns	166.0	31/10/21	165.0	23/10/18	162.4	Oct-18		
Charters Towers	171.5	31/10/21	162.7	4/07/08	162.5	Oct-21	157.1	Aug-13 & Jan-14
Dalby	164.9	31/10/21	162.2	20/02/14	160.3	Apr-14		
Emerald	171.1	31/10/21	167.9	23/10/18	163.9	Oct-18		
Gladstone	165.8	31/10/21	163.1	15/10/18	160.5	Oct-18		

Goondiwindi	167.9	25/10/18			164.5	Oct-18		
Gympie	163.6	31/10/21	160.7	21/10/18	157.4	Oct-18		
Hervey Bay	163.1	25/10/18			161.3	Oct-18		
Ingham	165.9	18/11/18			159.9	Oct-18		
Innisfail	165.7	31/10/21	164.2	27/10/18	161.7	Oct-18		
Kingaroy	163.8	31/10/21	162.3	27/10/18	158.5	Oct-18		
Longreach	176.2	31/10/21	169.9	13/10/18	170.2	Oct-21	168.4	Feb-14
Mackay	163.8	15/10/18			162.5	Oct-18		
Mareeba	167.9	31/10/21	166.7	27/10/18	163.5	Oct-18		
Maryborough	161.2	31/10/21	160.2	4/07/08	157.0	Aug-13		
Miles	165.5	10/01/14			164.4	Jan-14 & Mar-14		
Moranbah	167.2	7/02/14			165.7	Feb-14		
Mount Isa	169.9	11/11/18			167.1	Oct-18		
Rockhampton	165.7	28/10/18			163.0	Oct-18		
Roma	166.7	23/07/08			163.2	Jul-08		
Toowoomba	166.8	13/05/21			163.9	Oct-21	157.2	Oct-18
Townsville	165.5	31/10/21	163.4	23/10/18	160.7	Oct-18		
Tully	167.5	31/10/21	163.9	13/10/18	160.7	Oct-21	159.9	Jan-14 to Aug-14
Warwick	161.9	24/10/18			157.6	Oct-18		
Yeppoon	164.7	21/10/18			162.3	Oct-18		

The monthly average ULP price of 170.2 cpl observed in Longreach was the all-time highest monthly average observed in any of the centres monitored by RACQ.

Average diesel prices remain substantially below the record highs observed in July 2008. The record high monthly average diesel prices for centres in regional Queensland range from 177.1 cpl (observed in Mackay) to 185.9 cpl (observed in Longreach).

Of the 37 regional centres monitored by RACQ, all had an average indicative ULP and diesel retail margin lower than that charged in Brisbane. The lowest indicative retail margin on ULP, at negative 3.0 cpl, was charged in Roma, 15.9 cpl lower than Brisbane. The highest margin in regional Queensland of 11.5 cpl, was observed in Toowoomba and was 1.4 cpl lower than that observed in Brisbane. At negative 0.6 cpl, the lowest diesel indicative retail margin was observed in Mount Isa, 10.5 cpl lower than Brisbane. Longreach had the highest indicative retail margin, at 9.0 cpl, 0.9 cpl lower than Brisbane.

Outlook

In the last week of October, the Brent crude oil price showed its first weekly loss in two months. However, it is uncertain whether this marks the end of the oil price rally. Demand for oil continues to outstrip supply and there are no signs that OPEC+ will substantially increase their production and other suppliers are yet to ramp up production after the COVID-induced shut-downs.

While further substantial increases in the oil price are unlikely and prices will most likely stabilise in the coming weeks, there are no indications that oil prices will start to trend down in the near future. Looking forward Brent crude prices at about 85 US\$/bbl are likely to remain for the rest of 2021 and into 2022. These Brent prices are a three-year record high. A Brent price this high was last observed in October

2018.

The high oil prices in October led to record high retail prices being observed in the Greater Brisbane, other SEQ, and several regional ULP markets. It is likely that these new records will again be exceeded in November, and records will be surpassed in other towns and cities in Queensland.

A new record high daily average ULP price exceeding 190 cpl, is likely to be observed in Greater Brisbane (and the other SEQ metropolitan centres) in November and possibly again in December. At this point it is most likely that the average ULP price in Greater Brisbane will remain below 200 cpl for the foreseeable future. However, another strong increase in the oil price could lead to the 200 cpl price being exceeded in early 2022.

The next monthly fuel price report will be released in early December 2021.

Data sources

Data and analyses presented in this report supersedes all previous reports.

All data presented in this report are RACQ calculations using OPIS data.